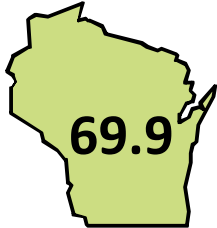




Parkview Mid | Ashwaubenon

School Report Card | 2011-12 | Summary

Overall Accountability Score and Rating



Meets Expectations

Overall Accountability Ratings	Score
Significantly Exceeds Expectations	83-100
Exceeds Expectations	73-82.9
Meets Expectations	63-72.9
Meets Few Expectations	53-62.9
Fails to Meet Expectations	0-52.9

Priority Areas	School Score	Max Score	6-8 State	6-8 Max
Student Achievement	75.1/100		66.4/100	
Reading Achievement	34.8/50		30.3/50	
Mathematics Achievement	40.3/50		36.1/50	
Student Growth	56.3/100		55.0/100	
Reading Growth	27.6/50		26.9/50	
Mathematics Growth	28.7/50		28.1/50	
Closing Gaps	57.7/100		66.0/100	
Reading Achievement Gaps	29.4/50		32.2/50	
Mathematics Achievement Gaps	28.3/50		33.8/50	
Graduation Rate Gaps	NA/NA		NA/NA	
On-Track and Postsecondary Readiness	90.4/100		87.6/100	
Graduation Rate (when available)	NA/NA		NA/NA	
Attendance Rate (when graduation not available)	75.2/80		73.6/80	
3rd Grade Reading Achievement	NA/NA		NA/NA	
8th Grade Mathematics Achievement	15.2/20		14.0/20	
ACT Participation and Performance	NA/NA		NA/NA	

Student Engagement Indicators	Total Deductions: 0
Test Participation Lowest Group Rate (goal ≥95%)	Goal met: no deduction
Absenteeism Rate (goal <13%)	Goal met: no deduction
Dropout Rate (goal <6%)	Goal met: no deduction

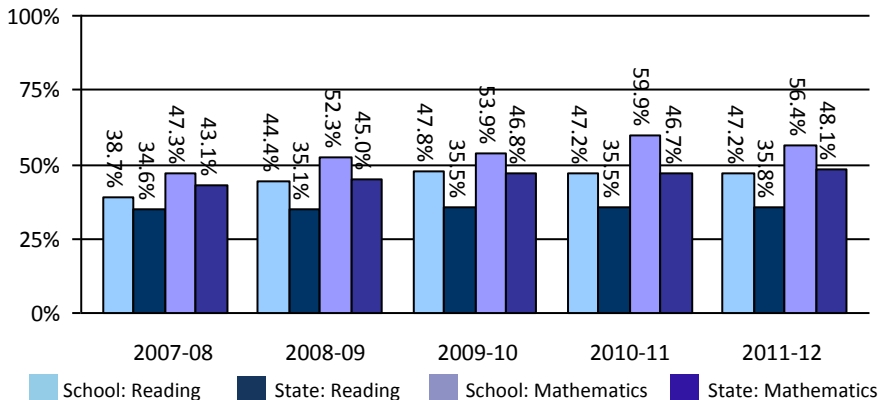
School Information

Grades	6-8
School Type	Middle School
Enrollment	762
<i>Race/Ethnicity</i>	
American Indian or Alaska Native	3.7%
Asian or Pacific Islander	4.3%
Black not Hispanic	5.9%
Hispanic	5.6%
White not Hispanic	80.4%
<i>Student Groups</i>	
Students with Disabilities	11.2%
Economically Disadvantaged	31.4%
Limited English Proficient	3.3%

Wisconsin Student Assessment System Percent Proficient and Advanced

Includes Wisconsin Knowledge and Concepts Examination (WKCE) and Wisconsin Alternate Assessment for Students with Disabilities (WAA-SwD). WKCE college and career readiness benchmarks based on National Assessment of Educational Progress.

State proficiency rate is for all tested grades: 3-8 and 10



Notes: Overall Accountability Score is an average of Priority Area Scores, minus Student Engagement Indicator deductions. The average is weighted differently for schools that cannot be measured with all priority area scores, to ensure that Overall Accountability Score can be compared fairly for all schools. Accountability Ratings do not apply to Priority Area Scores. Details can be found at <http://dpi.wi.gov/oea/acct/accountability.html>.



Parkview Mid | Ashwaubenon

School Report Card | 2011-12 | Notes

Priority Areas

- **Student Achievement** measures the level of knowledge and skills among students in the school, compared to state and national standards. It includes a composite of reading and mathematics performance by the “all students” group in the Wisconsin Student Assessment System (WSAS) for all tested grades in the school.
- **Student Growth** describes how much student knowledge of reading and mathematics in the school changes from year to year. It uses a point system that gives positive credit for students progressing toward higher performance levels, and negative credit for students declining below proficiency.
- **Closing Gaps** shows how the performance of student groups experiencing statewide gaps in achievement and graduation is improving in the school. It recognizes the importance of having all students improve, while focusing on the need to close gaps by lifting lower-performing groups. Specific race/ethnicity groups, students with disabilities, economically disadvantaged students, and English language learners are compared against their complementary groups.
- **On-Track and Postsecondary Readiness** indicates the success of students in the school in achieving educational milestones that predict postsecondary success. It includes the graduation rate for schools that graduate students, or the attendance rate for other schools. It also includes measures of third-grade reading and eighth-grade mathematics achievement, and ACT participation and performance, as applicable to the school.

Student Engagement Indicators

Student Engagement Indicators are measures outside the four priority areas that affect student success or the soundness of the index. Each indicator has a goal, and schools that fail to meet that goal receive a point deduction from their overall score. Goals were set by looking at statewide data and establishing thresholds that identify schools contributing the most to lowering Wisconsin’s overall performance in the areas below.

- **Test Participation Rate:** Every school has a goal of 95 percent participation in the Wisconsin Student Assessment System (WSAS). The school’s performance is measured by the participation rate of the lowest-participating student group. If this rate is less than 95 percent, but at least 85 percent, five points are deducted from the school’s overall score; if this rate is less than 85 percent, 10 points are deducted.
- **Absenteeism Rate:** This indicator describes the proportion of students in the school who attend school less than 84.1 percent of the time. If the absenteeism rate in the school is 13 percent or more, five points are deducted from its score. The absenteeism rate is different from the attendance rate because it measures students who are absent from school a certain amount of time, not how often students are present in school.
- **Dropout Rate:** The goal for all middle and high schools is to have a dropout rate of less than six percent. A school not meeting the goal has five points deducted from its score. Note that dropout rate is not the opposite of graduation rate. A dropout rate includes any student who leaves school in grades 7-12 without expecting to earn a high school diploma, while a graduation rate counts students who earn a high school diploma within a certain time (four or six years) after starting ninth grade.

Notes on this School Report Card

- The data presented in this report card are for public, state, and federal accountability purposes.
- Student performance on the Wisconsin Student Assessment System (WSAS) is the foundation of this report. WSAS data include results for both Wisconsin Knowledge and Concepts Examination (WKCE) and Wisconsin Alternate Assessment for Students with Disabilities (WAA-SwD).
- Starting in 2011-12, schools are held to a higher college and career readiness proficiency benchmark by aligning the cut scores of the WKCE to those of the National Assessment of Educational Progress (NAEP). These higher cut scores have been retroactively applied to show trends. The higher cut scores only apply to WKCE Reading and Mathematics scores, not the WAA-SwD, at this time.
- Some supplemental data that are not used for accountability calculations are presented here for informational purposes in order to provide context. Additional data on student performance are available here: <http://dpi.wi.gov/sig/index.html>.
- To protect student privacy, data for groups of fewer than 20 students are replaced by asterisks on public report cards.
- NA is used when data are Not Applicable. For example, a school that does not graduate students will have NA listed for graduation results.
- * is used to protect student privacy when groups have fewer than 20 students.
- The analytical processes used in this report card are described in the Technical Guide and Interpretive Guide: <http://dpi.wi.gov/oea/acct/accountability.html>.
- State comparison scores shown on page 1 are shown for context only. They are not used to determine this school’s score or rating.
- In the future, the School Report Card will be web-based and will allow readers to click on features for more supplementary data.