

STATE PROJECT ID: 9266-10-71

Avres\_pdfs\p1c1c1g  
 3/6/2013  
 M:\Ashwaubenon\_School\_District\56-0196.00\_SRTS\DNIC-10.dgn

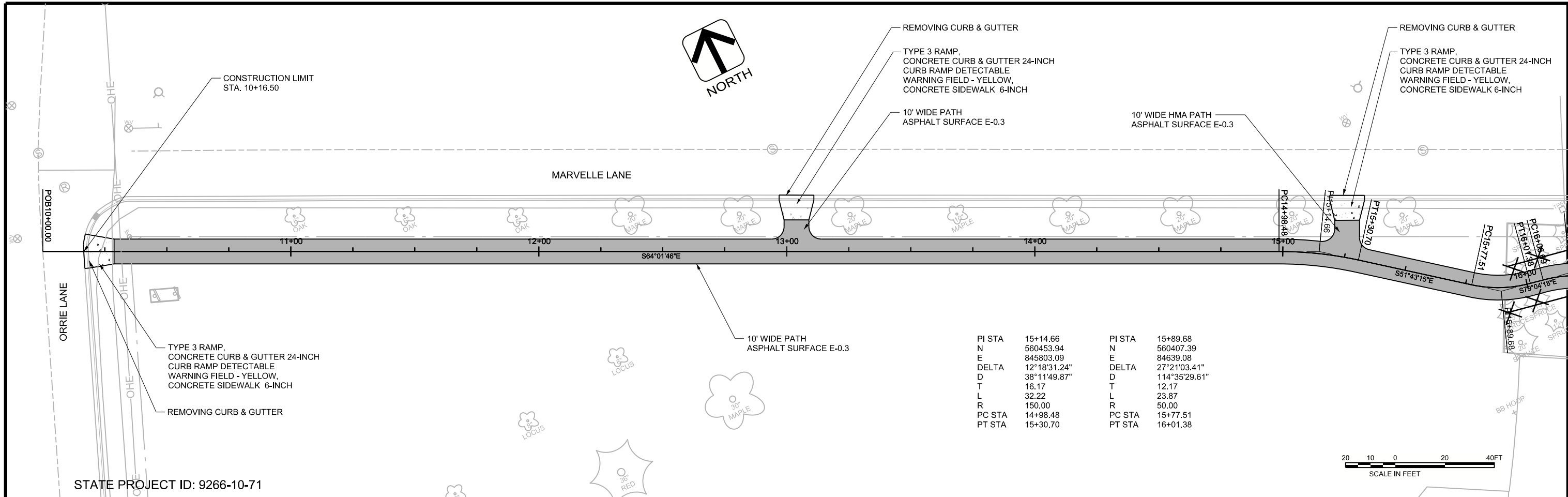
DES BY P. KOLASZEWSKI	BOOK NO XXX				
DR BY J. SHALLOW	JOB NO 56-0196.00				
CHK BY C. SCHUH	DATE APRIL 2013	NO	DATE	APPROVAL	NO
					DATE
					REVISION

ASHWAUBENON SCHOOL DISTRICT  
 SAFE ROUTES TO SCHOOL  
 VALLEY VIEW ELEMENTARY SCHOOL & PARK



OVERALL SITE PLAN

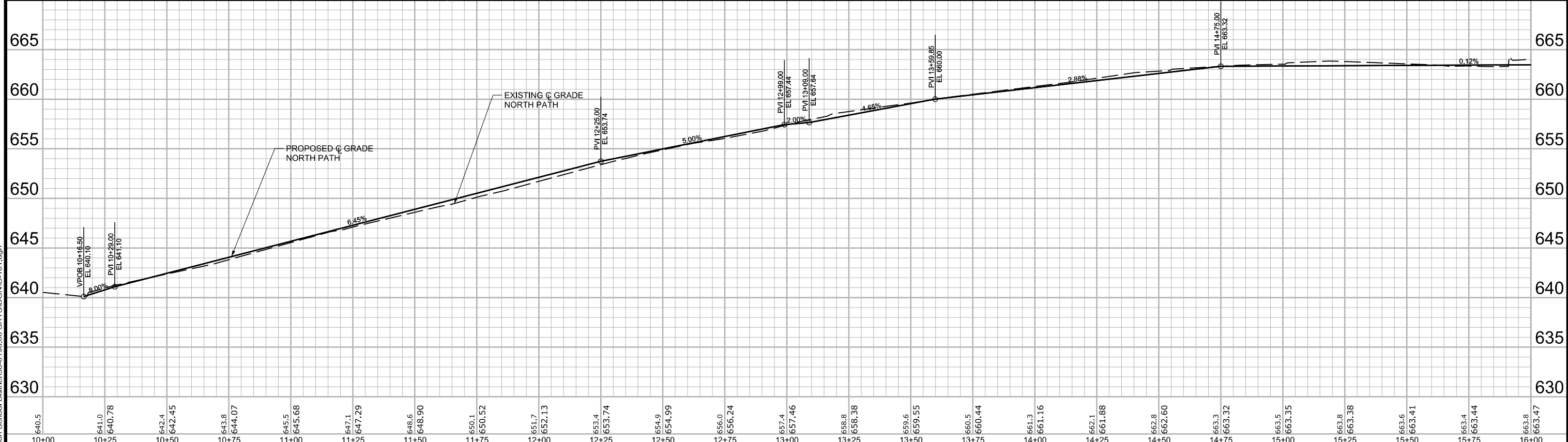
DRAWING NO  
**C-10**  
 SHEET NO  
 5



PI STA	15+14.66	PI STA	15+89.68
N	560453.94	N	560407.39
E	845803.09	E	84639.08
DELTA	12°18'31.24"	DELTA	27°21'03.41"
D	38°11'49.87"	D	114°35'29.61"
T	16.17	T	12.17
L	32.22	L	23.87
R	150.00	R	50.00
PC STA	14+98.48	PC STA	15+77.51
PT STA	15+30.70	PT STA	16+01.38



STATE PROJECT ID: 9266-10-71



DES BY	P. KOLASZEWSKI	BOOK NO	
DR BY	J. SHALLOW	BOOK NUMBER	
CHK BY	C. SCHUH	JOB NO	56-0196.00
		DATE	DECEMBER 2012

NO	DATE	REVISION	NO	DATE	REVISION

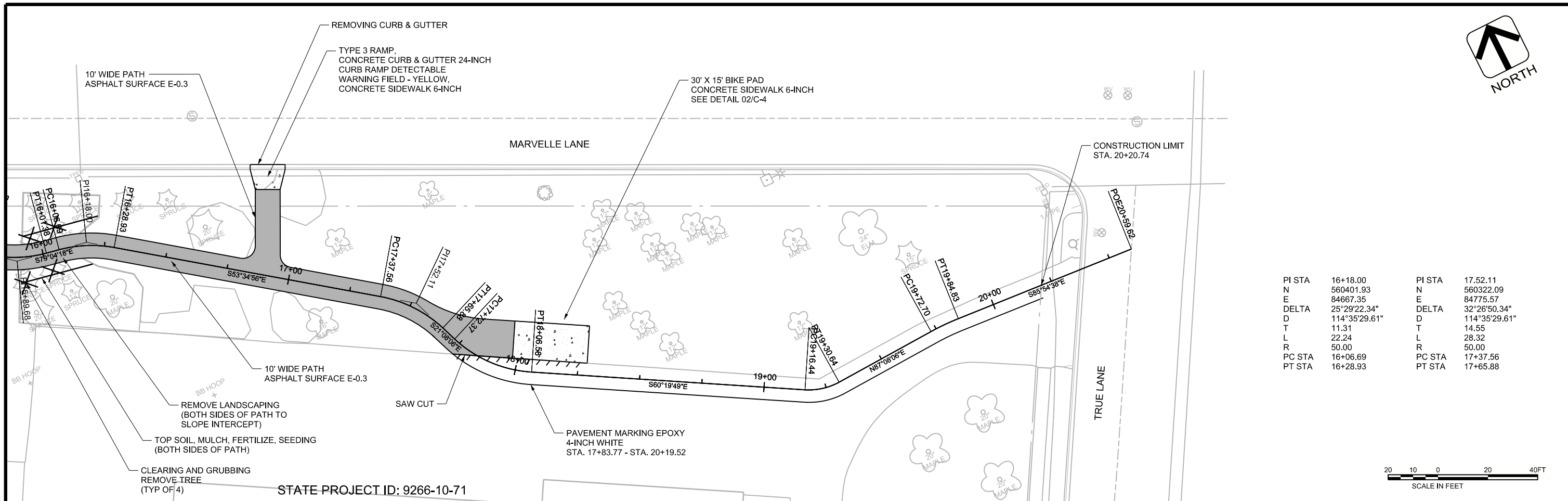
ASHWAUBENON SCHOOL DISTRICT  
SAFE ROUTES TO SCHOOL  
VALLEY VIEW ELEMENTARY SCHOOL & PARK



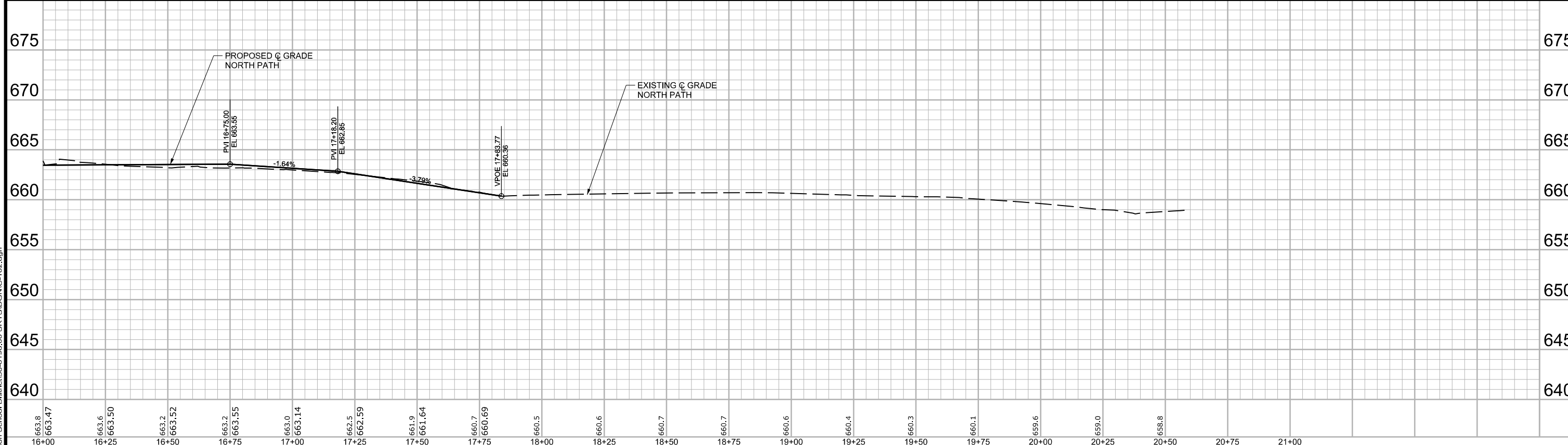
NORTH PATH  
PLAN AND PROFILE

DRAWING NO  
**C-101**  
SHEET NO  
6

Avres\_pdr.plt  
 3/6/2013  
 M:\Ashwaubenton\_School\_District\56-0196.00\_SRTS\DNIC-101.dgn



PI STA	16+18.00	PI STA	17.52.11
N	560401.93	N	560322.09
E	84667.35	E	84775.57
DELTA	25°29'22.34"	DELTA	32°26'50.34"
D	114°35'29.61"	D	114°35'29.61"
T	11.31	T	14.55
L	22.24	L	28.32
R	50.00	R	50.00
PC STA	16+06.69	PC STA	17+37.56
PT STA	16+28.93	PT STA	17+65.88



DES BY	P. KOLASZEWSKI	BOOK NO		BOOK NUMBER	
DR BY	J. SHALLOW	JOB NO	56-0196.00		
CHK BY	C. SCHUH	DATE	DECEMBER 2012	NO	DATE
		REVISION		NO	DATE
		REVISION			

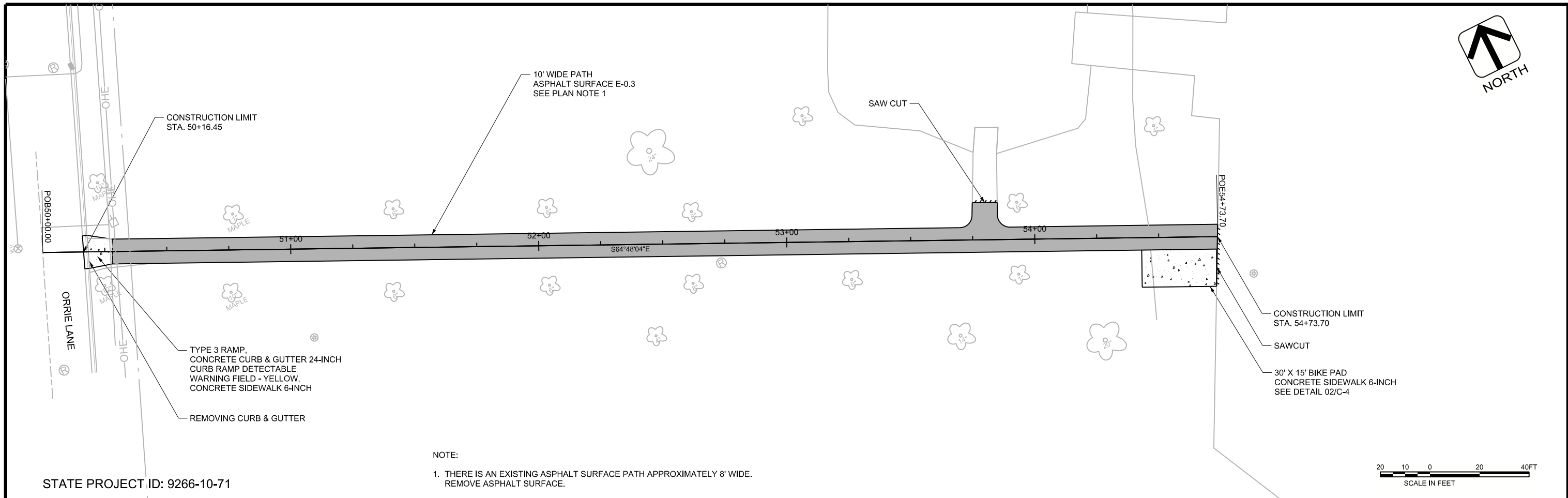
**ASHWAUBENON SCHOOL DISTRICT**  
**SAFE ROUTES TO SCHOOL**  
**VALLEY VIEW ELEMENTARY SCHOOL & PARK**



**NORTH PATH**  
**PLAN AND PROFILE**

DRAWING NO  
**C-102**  
 SHEET NO  
**7**

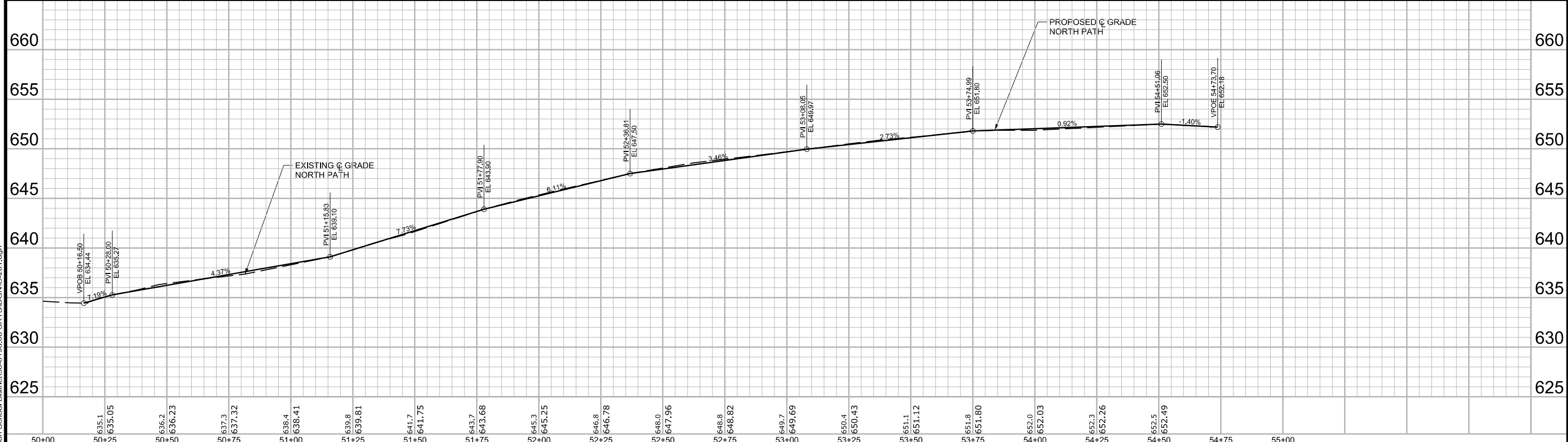
Avres\_pdr.plt.ctb  
 3/6/2013  
 M:\Ashwaubenton\_School District\56-0196.00\_SRTS\DNIC-102.dgn



STATE PROJECT ID: 9266-10-71

NOTE:

1. THERE IS AN EXISTING ASPHALT SURFACE PATH APPROXIMATELY 8' WIDE. REMOVE ASPHALT SURFACE.



DES BY P. KOLASZEWSKI	BOOK NO BOOK NUMBER
DR BY J. SHALLOW	JOB NO 56-0196.00
CHK BY C. SCHUH	DATE DECEMBER 2012

NO	DATE	REVISION	NO	DATE	REVISION

ASHWAUBENON SCHOOL DISTRICT  
SAFE ROUTES TO SCHOOL  
VALLEY VIEW ELEMENTARY SCHOOL & PARK



SOUTH PATH  
PLAN AND PROFILE

DRAWING NO  
**C-201**  
SHEET NO  
8

Avres\_pdr.ctb  
 3/6/2013  
 M:\Ashwaubenon\_School\_District\56-0196.00\_SRTS\DNIC-201.dgn